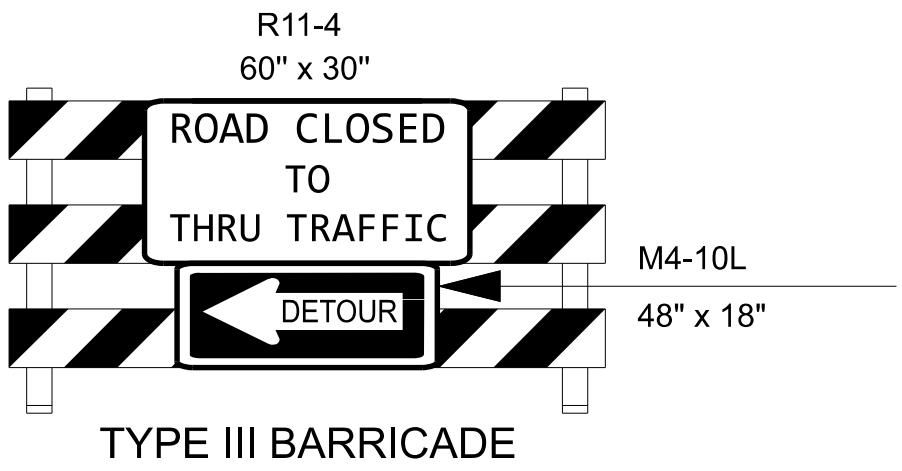
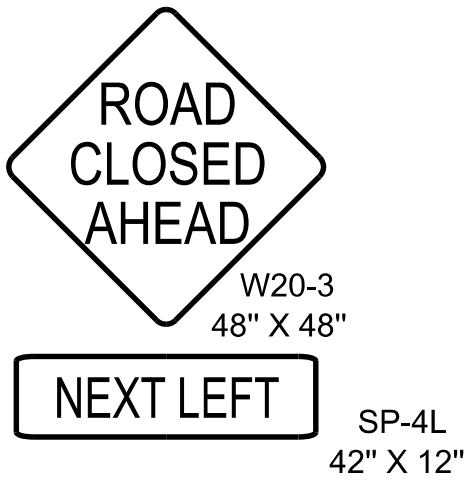


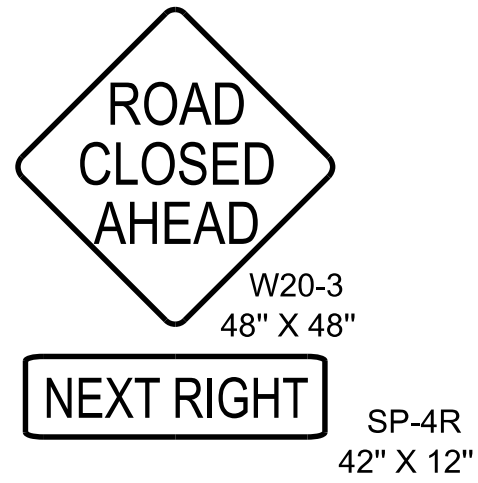
A



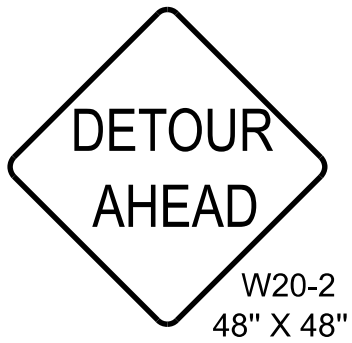
B



C



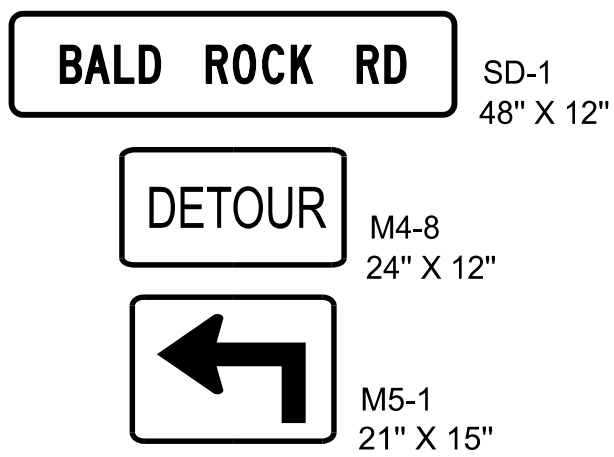
D



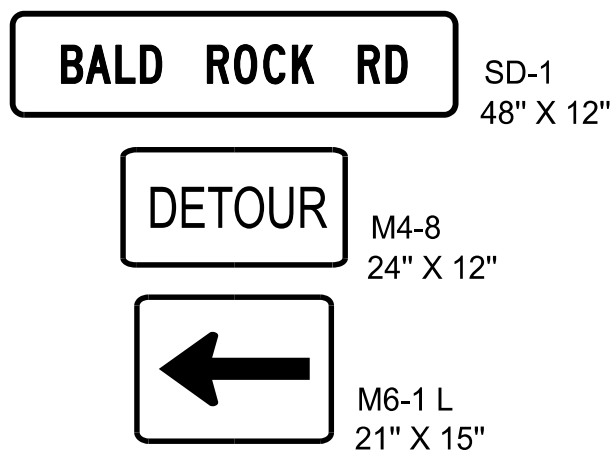
E



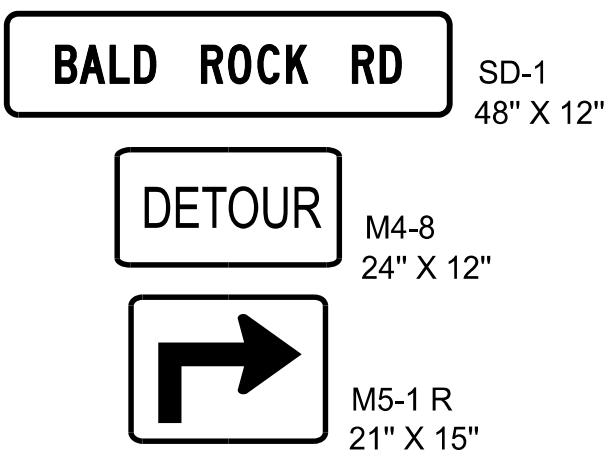
F



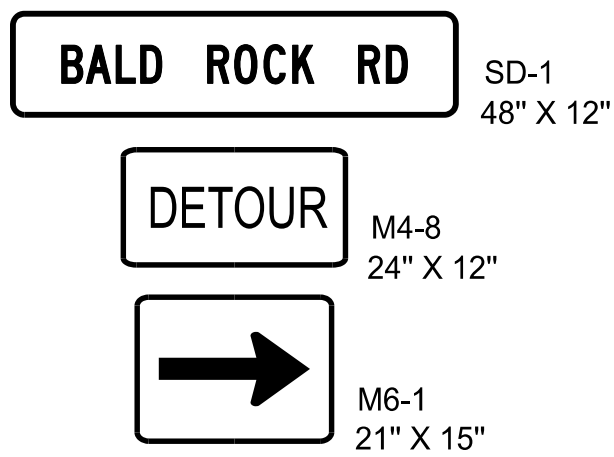
G



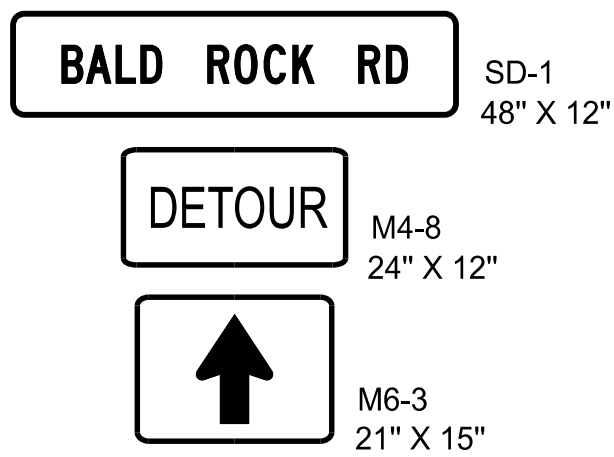
H



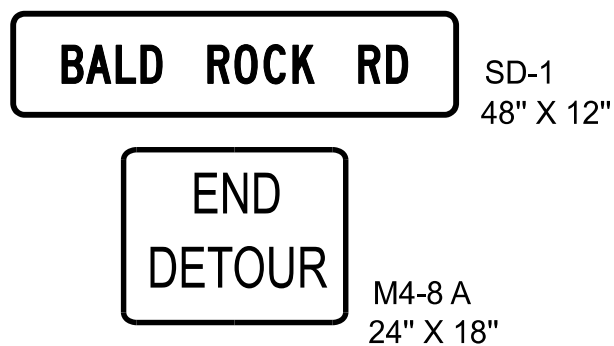
I



J

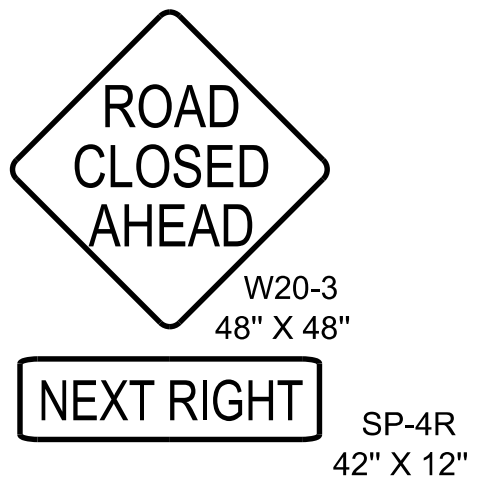
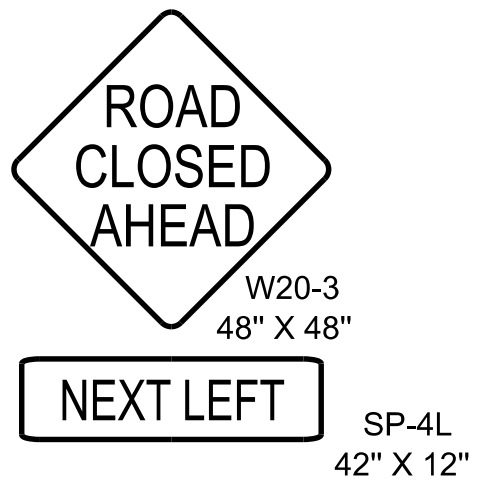
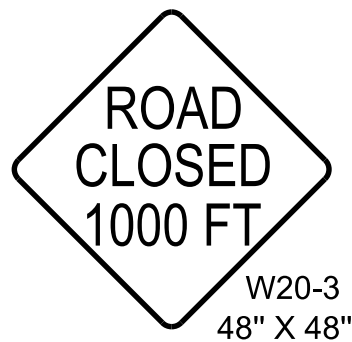
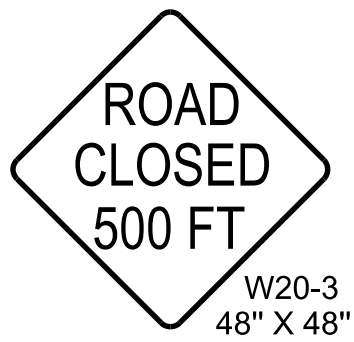
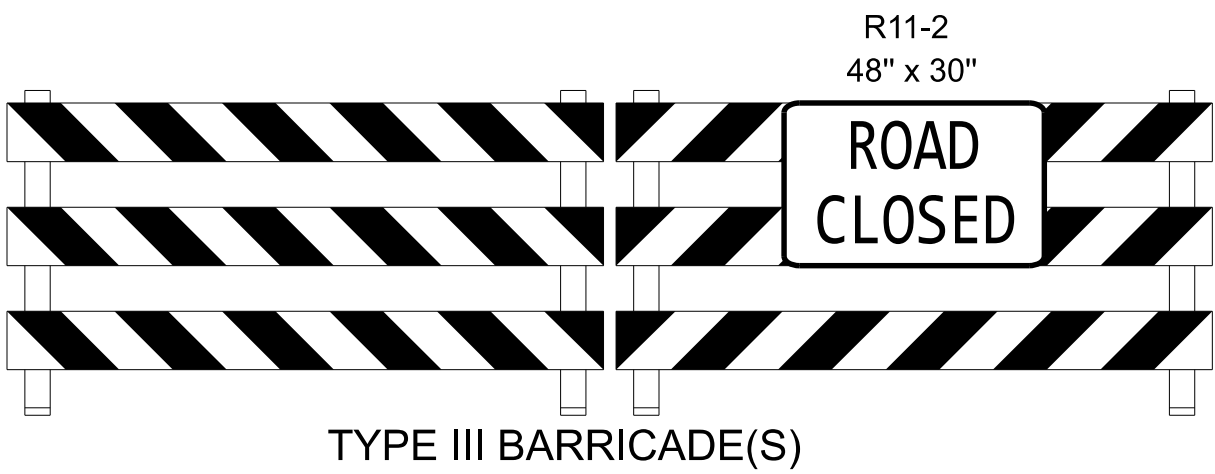


K



L

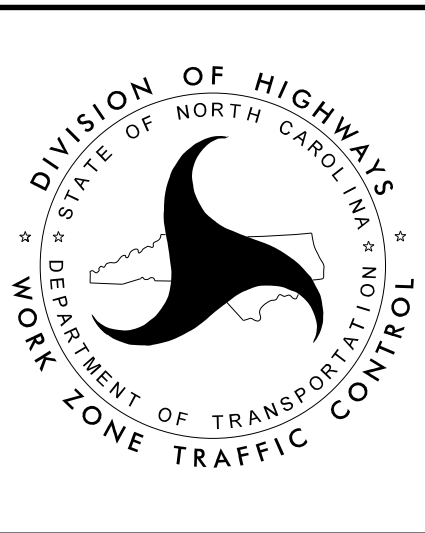
TO BE USED AT SITE SPECIFIC CLOSURES, PLACE THESE SIGNS PER RSD 1101.03 SHEET 1 OF 9.



NOTES:

1. TRAFFIC CONTROL DEVICES (A) THRU (L) SHALL BE INSTALLED PER ENGINEER'S INSTRUCTIONS.
2. SIGNS (G) THRU (L) ARE SPACED AT 200 FT PER RSD 1101.11 SHEET 4 OF 4.
3. THE CONTRACTOR IS RESPONSIBLE FOR MAINTAINING DRIVEWAY ACCESS THROUGHOUT THE LIFE OF THE PROJECT.
4. SEE TMP-2 FOR BALD ROCK ROAD SIGN DESIGN (SD-1).
5. USE THIS SHEET IN CONJUNCTION WITH TMP-3 AND RSD 1101.03 SHEET 1 OF 9.

APPROVED: _____ DATE: 7/29/2025 SEAL	Signed by: <u>Jacob H. Duke</u> 29530C0054E94D9. NORTH CAROLINA PROFESSIONAL ENGINEER SEAL 043777 JACOB H. DUKE
DOCUMENT NOT CONSIDERED FINAL UNLESS ALL SIGNATURES COMPLETED	



-L- BALD ROCK RD (SR1710)
OFFSITE DETOUR SIGNING